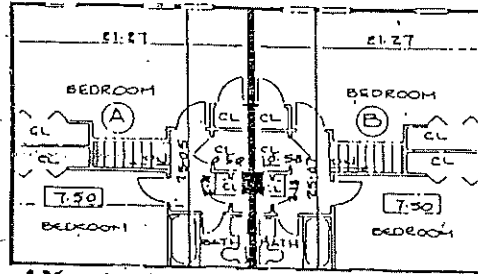
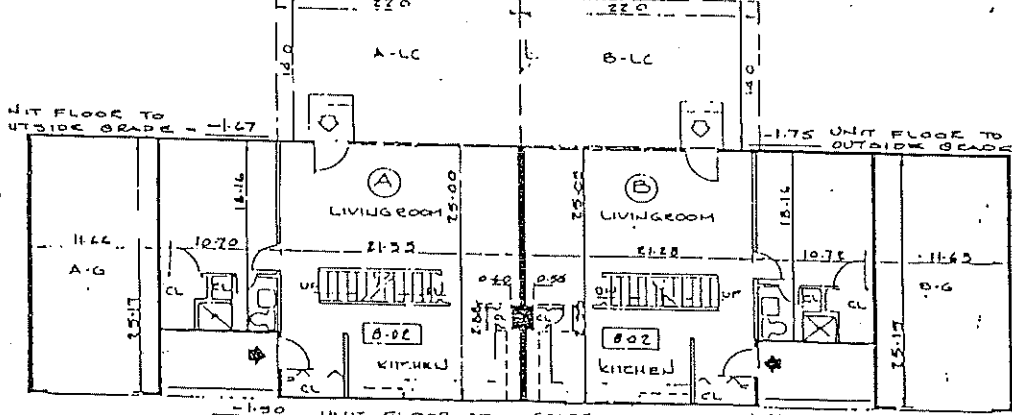


BECKETT  
Townhouse

UNIT NO.	AREA	UNIT NO.	AREA
A	1752 SF	B	1783 SF



A-21 FIRST FLOOR TO SECOND FLOOR - 8.23

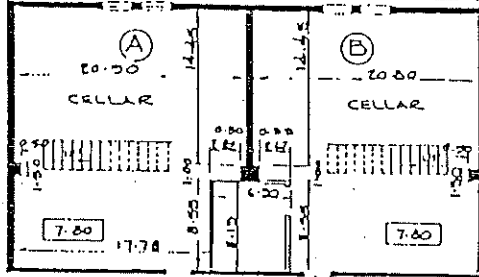


UNIT FLOOR TO OUTSIDE GRADE - -1.67

-1.75 UNIT FLOOR TO OUTSIDE GRADE

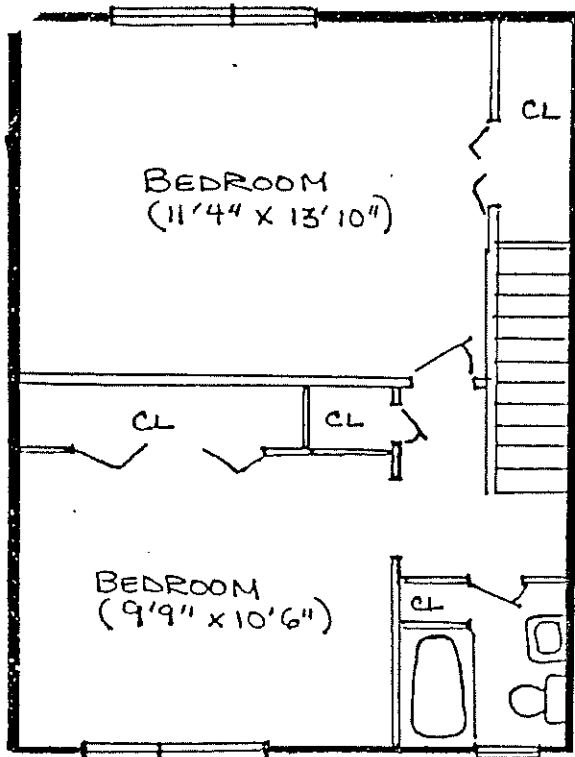
-1.50 UNIT FLOOR TO OUTSIDE GRADE - -1.67

B-70 BASEMENT FLOOR TO FIRST FLOOR - 8.70

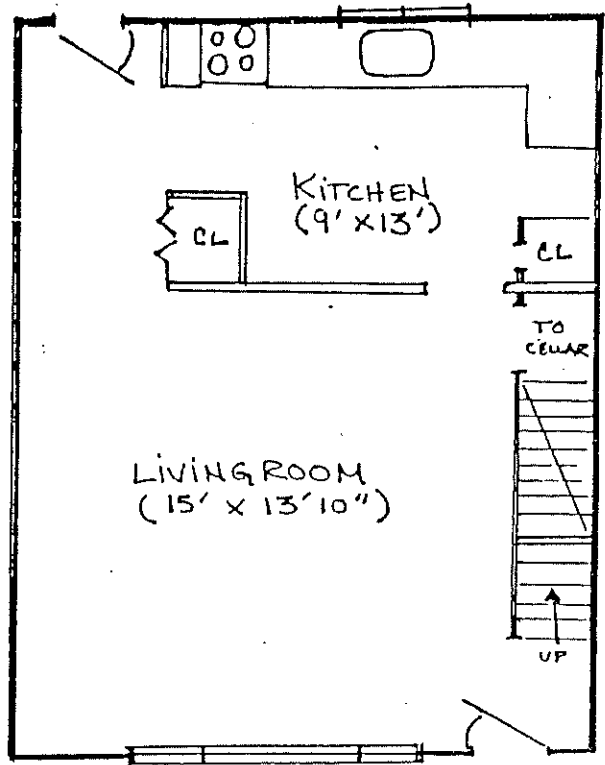


Doverbrook  
Estates Condominiums  
at Worcester

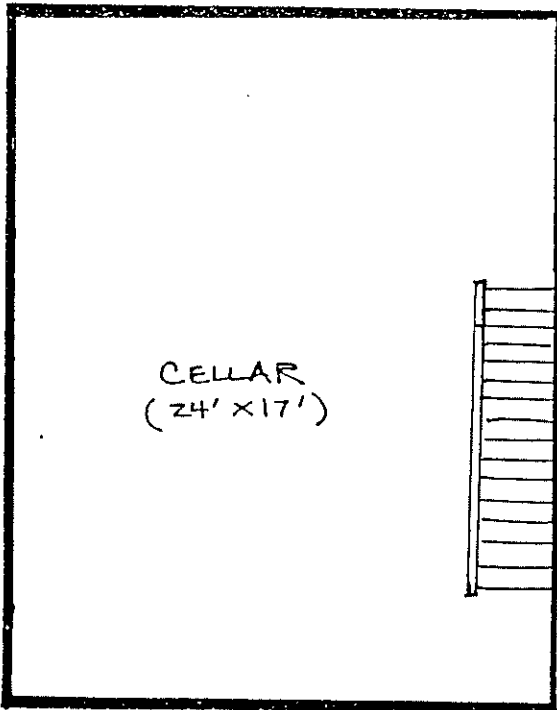
800 Piedleton Ave., Chicopee, MA 01090 (413) 503-5515



SECOND FLOOR



FIRST FLOOR



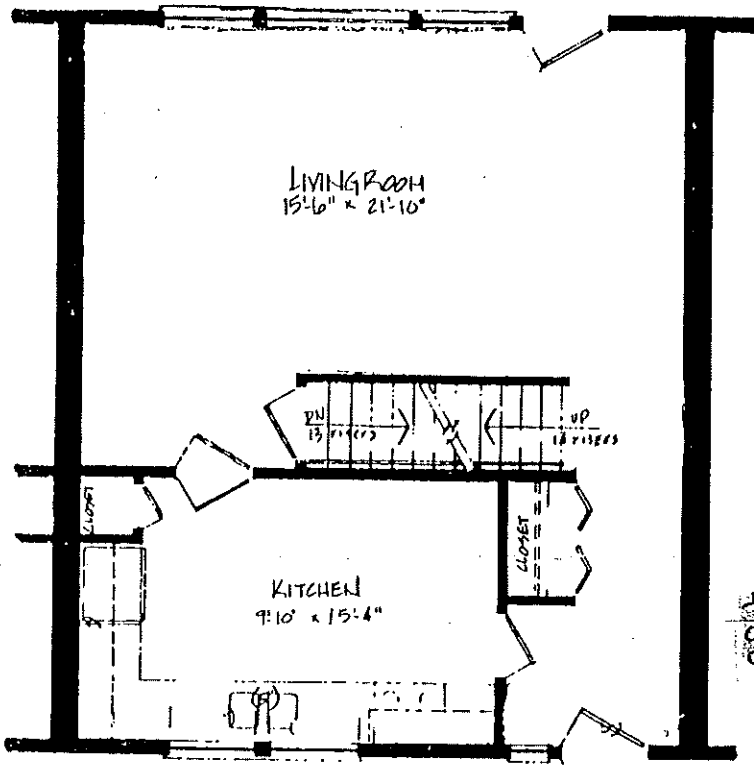
CELLAR

# HAMPDEN

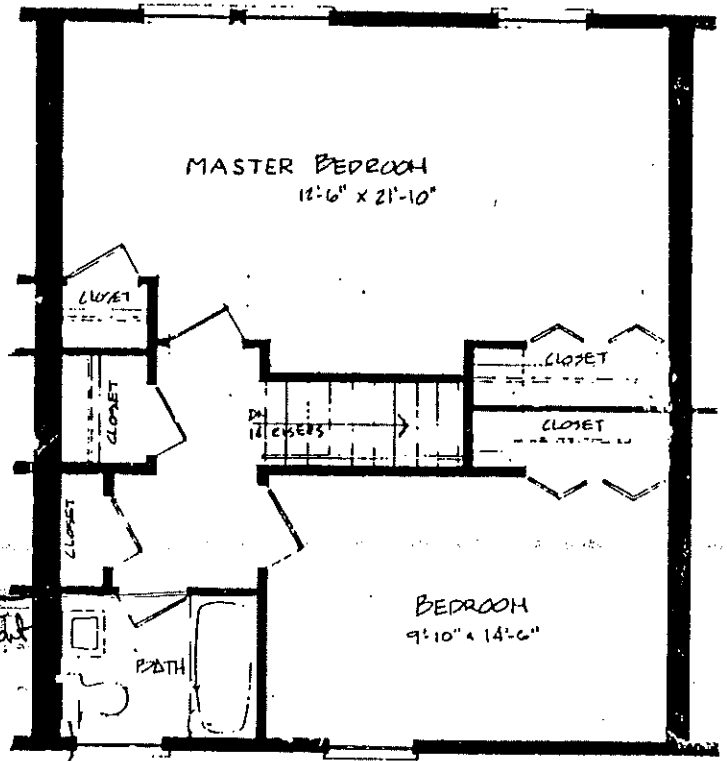
APPROX. 1250 SQ. FT.  
DIMENSIONS ARE APPROXIMATE

Townhouse

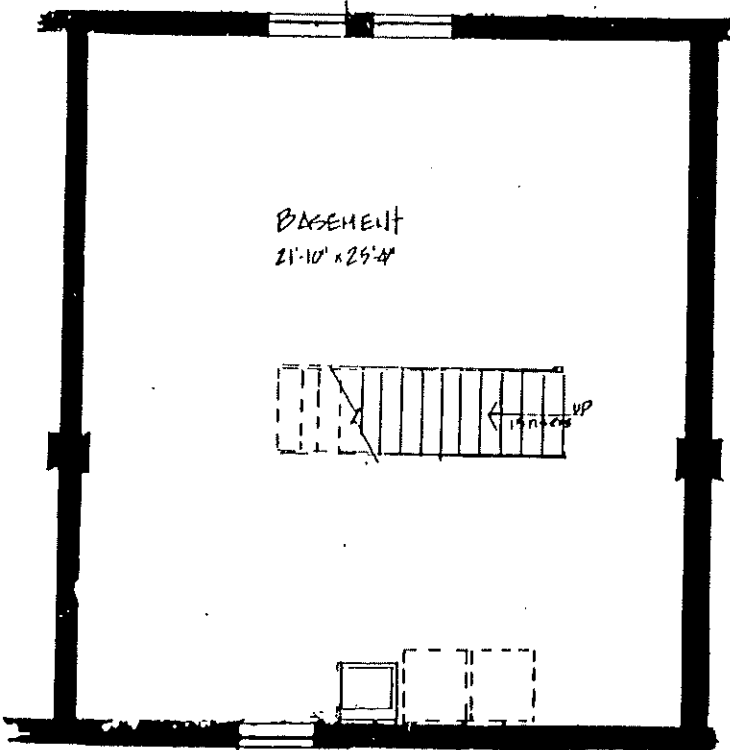
 **Doverbrook**  
**Estates** Condominiums  
at Westover  
899 Pendleton Ave., Chicopee, MA 01020 (413) 593-5515



FIRST FLOOR



SECOND FLOOR



BASEMENT

Townhouse

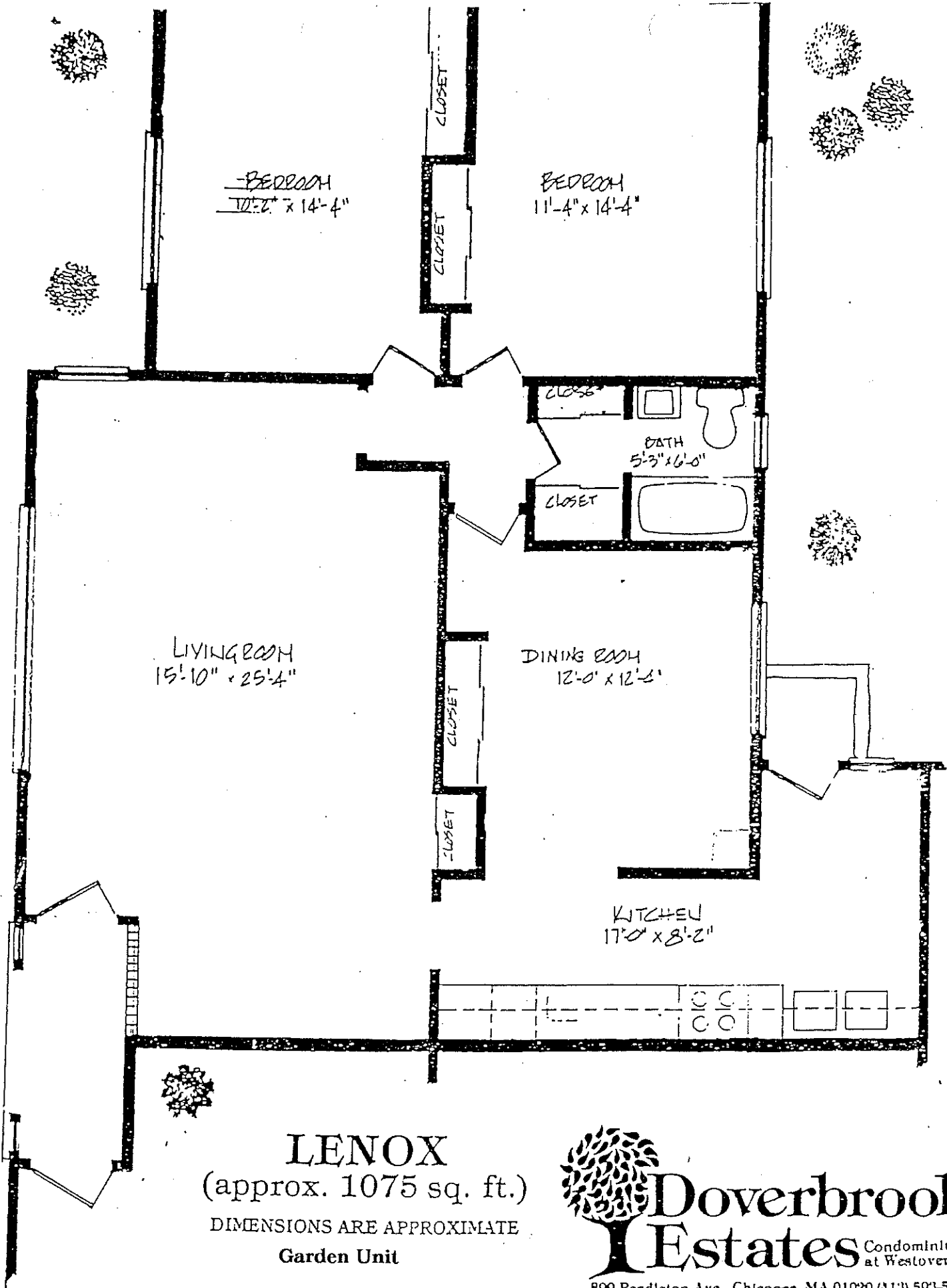
# BLANDFORD

(approx. 1575 sq. ft.)

DIMENSIONS ARE APPROXIMATE

**Doverbrook**  
**Estates** Condominiums  
at Westover

800 Pendleton Ave., Chicopee, MA 01080 (413) 593-5515



**LENOX**  
 (approx. 1075 sq. ft.)  
 DIMENSIONS ARE APPROXIMATE  
 Garden Unit

**Doverbrook**  
**Estates** Condominiums  
 at Westover  
 899 Pendleton Ave., Chicopee, MA 01020 (413) 593-5515

I HEREBY CERTIFY THAT THIS PLAN FULLY AND ACCURATELY DEPICTS THE LOCATION, LAYOUT, DIMENSIONS, AND UNIT NUMBER OF THE UNITS 6098 A AND 6098 B AT THE DOVERBROOK ESTATES CONDOMINIUM, AS BUILT.

*Robert E. Raymond*  
ROBERT E. RAYMOND, RLS DATE 8/08/83

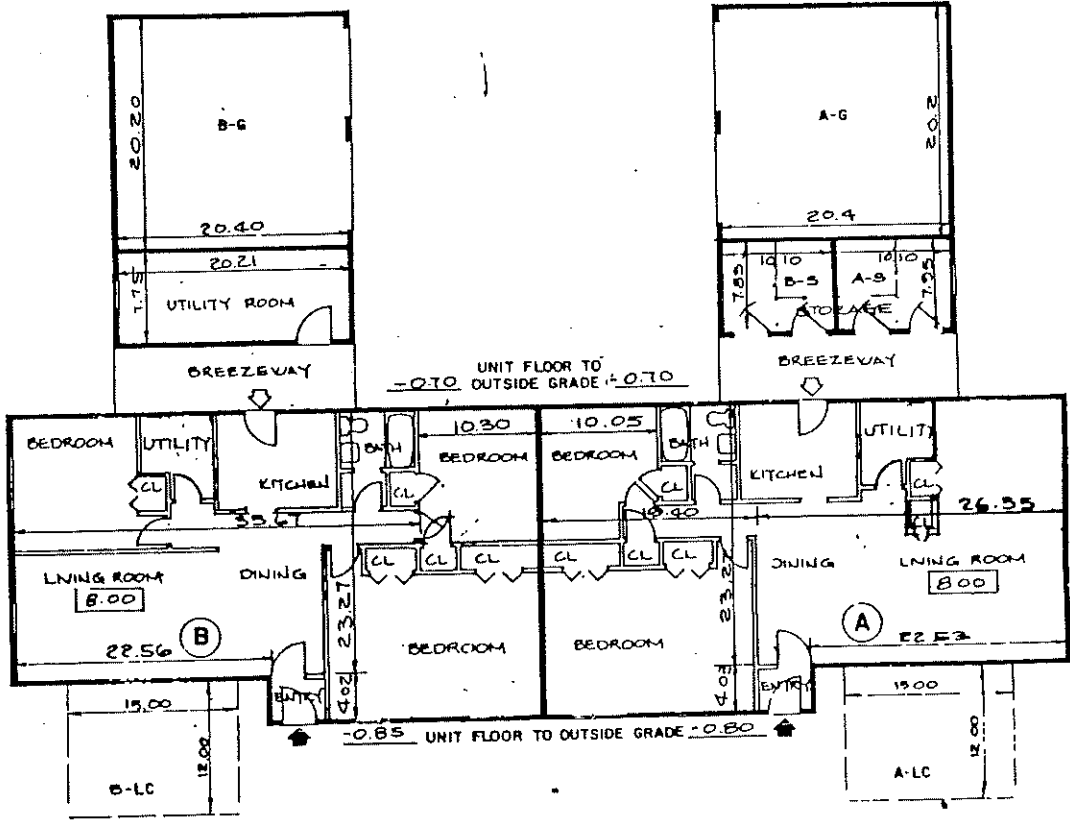
*Handwritten signature and date*  
8/08/83

LEGEND			
BATH	BATHROOM	◆	MAIN UNIT ENTRANCE
CL	CLOSET	◇	SECONDARY UNIT ENTRANCE
CLG	CEILING	⊙	UNIT NUMBER
FL	FLOOR	7.50	FL. TO CLG. HEIGHT
SF	SQUARE FEET	A-G	GARAGE DESIGNATION
STO	STORAGE	A-S	STORAGE DESIGNATION
		A-LC	LIMITED COMMON AREA DESIGNATION

### Leverette Garden Unit



UNIT NO	AREA	UNIT NO	AREA
B	1164 S.F.	A	1161 S.F.



BUILDING NO. 6098

DOVERBROOK ESTATES CONDOMINIUM  
CHICOPEE, MASSACHUSETTS

SCALE: 1/8" = 1'-0" DATE: MARCH 5, 1983

BUILDING IS SHOWN ON PLAN ENTITLED "SITE PLAN, PHASE II, DOVERBROOK ESTATES CONDOMINIUM, CHICOPEE, MASSACHUSETTS, SCALE: 1" = 50' DATE: MARCH 5, 1983, BY BRADFORD SAIVETZ & ASSOCIATES, INC., ENGINEERS & ARCHITECTS, BRAINTREE, MASSACHUSETTS".

I HEREBY CERTIFY THAT THIS PLAN WAS PREPARED IN ACCORDANCE WITH THE RULES AND REGULATIONS OF THE MASSACHUSETTS REGISTRY OF DEEDS, AS AMENDED TO JANUARY 1, 1976.

*Robert E. Raymond*  
ROBERT E. RAYMOND, RLS DATE 8/08/83

8/08/83  
DATE

*Handwritten signature and date*  
8/08/83

BRADFORD SAIVETZ & ASSOCIATES, INC.  
ENGINEERS & ARCHITECTS  
BRAINTREE, MASSACHUSETTS

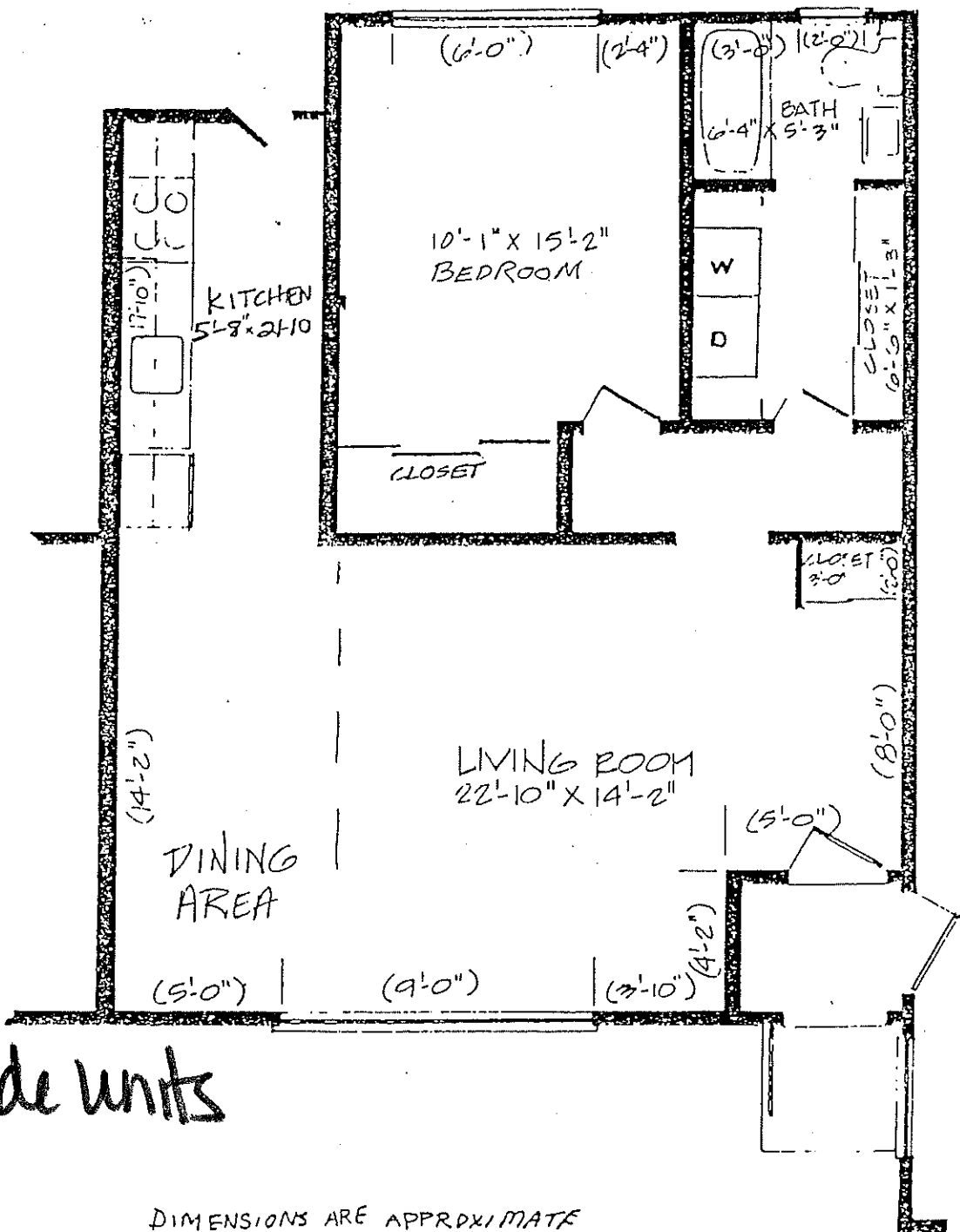




# Doverbrook Estates

Condominiums at Westover

889 Pendleton Ave., Chicopee, MA 01020 (413) 593-5515



inside units

DIMENSIONS ARE APPROXIMATE

## HUNTINGDON (1)

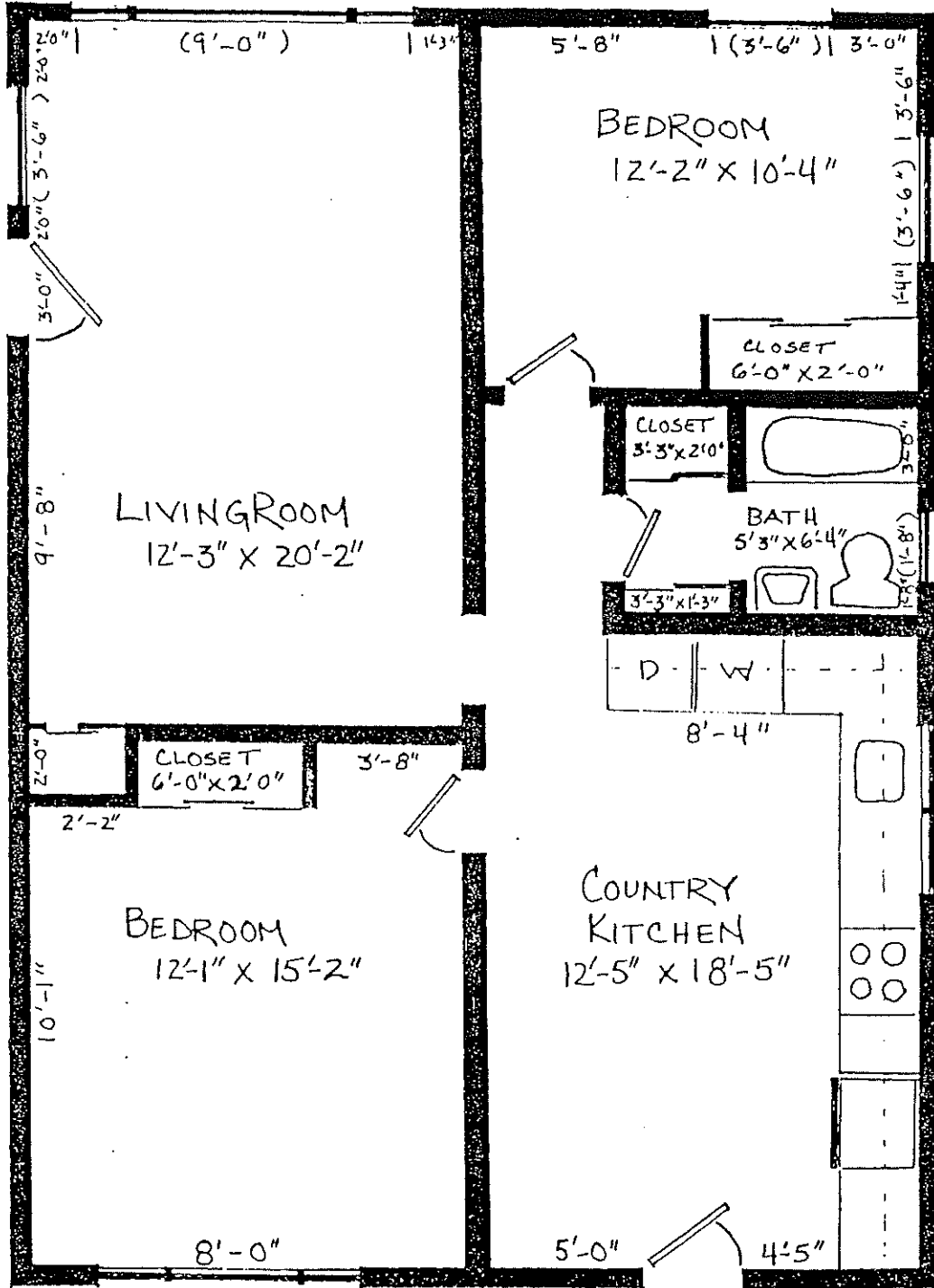
(approx. 700 sq. ft.)

Garden Unit

# Doverbrook Estates

Condominiums at Westover

899 Pendleton Ave., Chicopee, MA 01020 (413) 593-5515



DIMENSIONS ARE APPROXIMATE

*Outside / end  
units*

**HUNTINGTON (2)**

(approx. 850 sq. ft.)

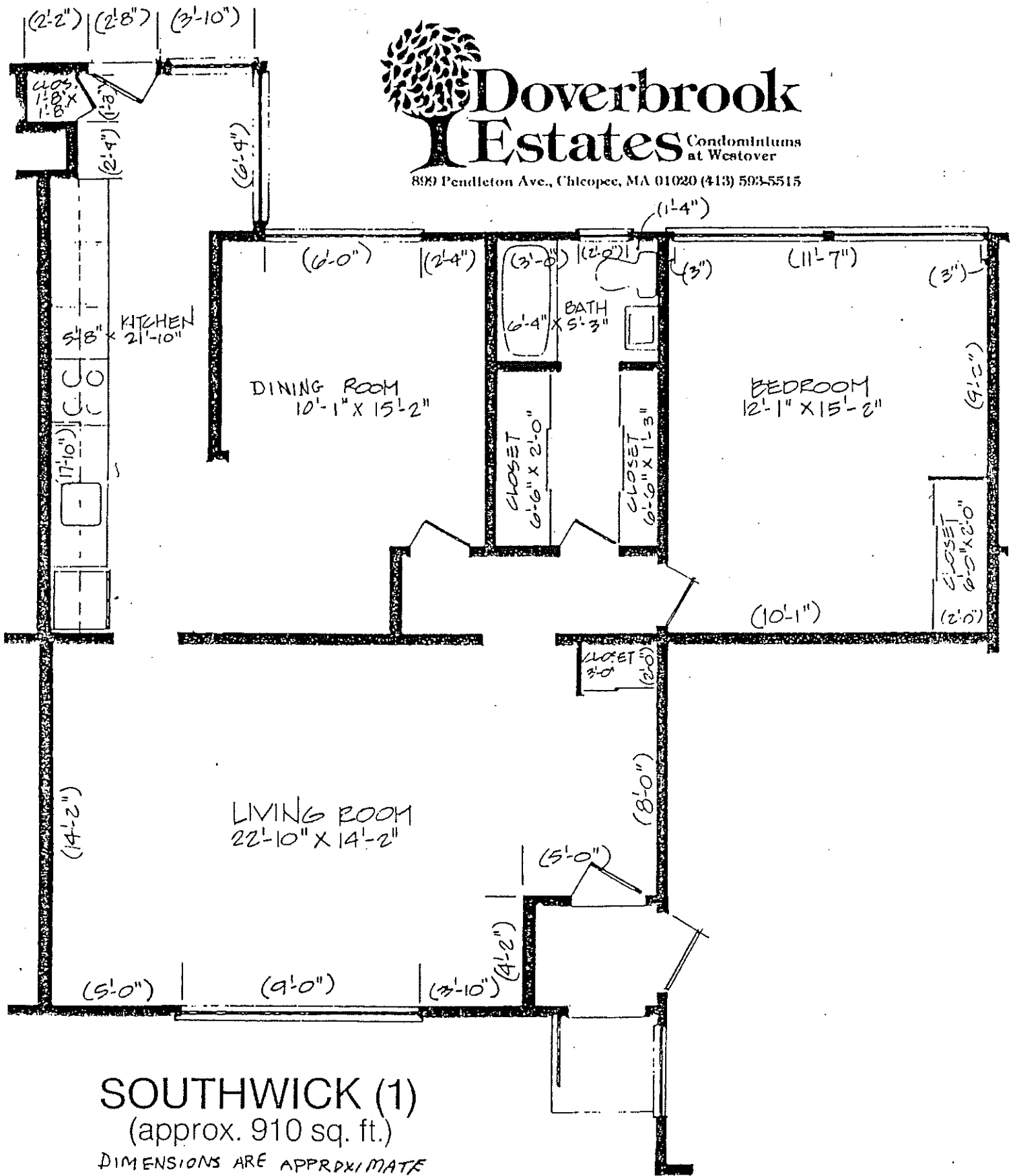
**Garden Unit**



# Doverbrook Estates

Condominiums at Westover

899 Pendleton Ave., Chicopee, MA 01020 (413) 593-5515



## SOUTHWICK (1)

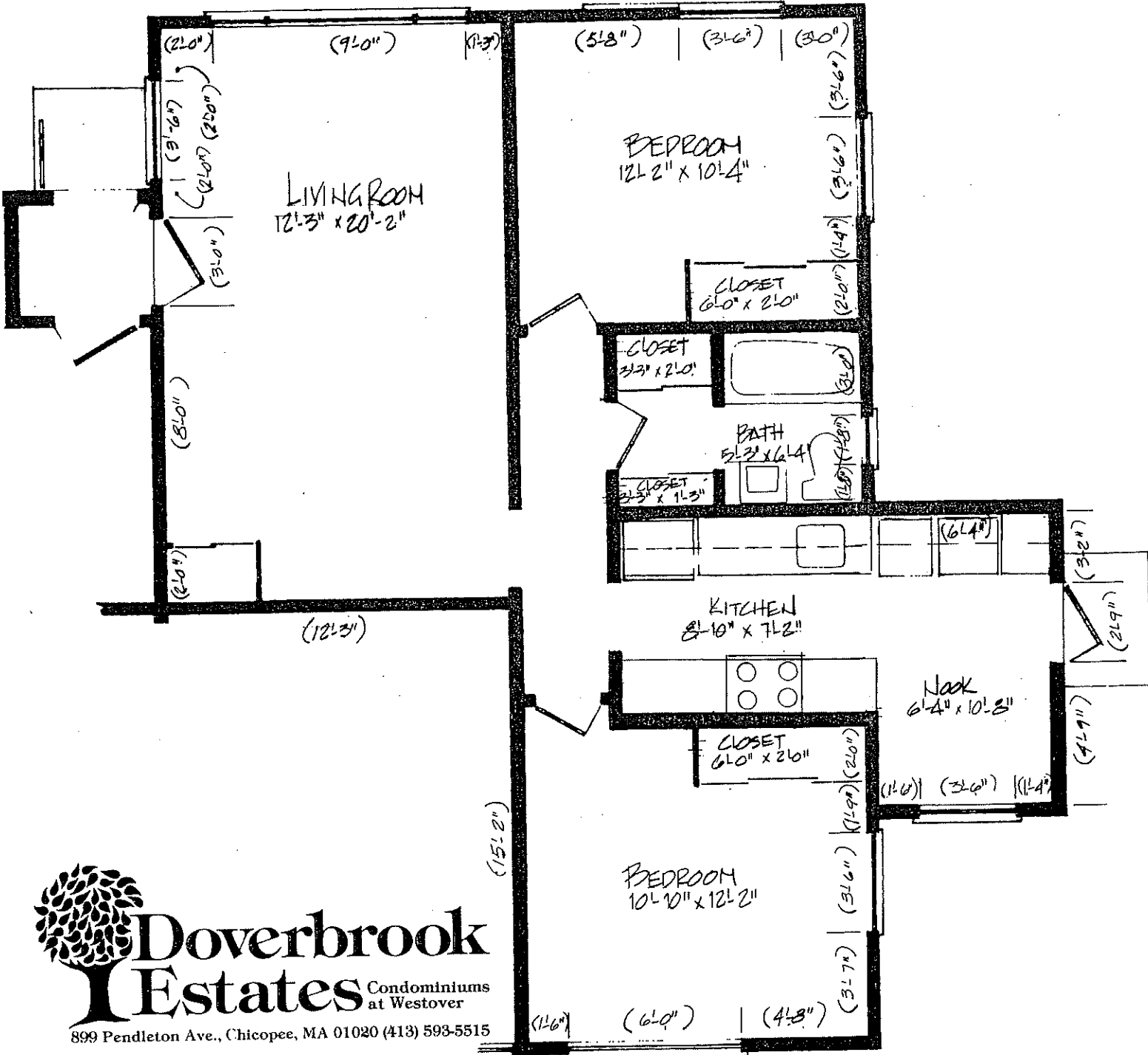
(approx. 910 sq. ft.)

DIMENSIONS ARE APPROXIMATE

# middle units

Garden Unit






**Doverbrook Estates**  
 Condominiums at Westover  
 899 Pendleton Ave., Chicopee, MA 01020 (413) 593-5515

END UNITS

DIMENSIONS ARE APPROXIMATE

**SOUTHWICK (2)**  
 (approx. 775 sq. ft.)

Garden Unit